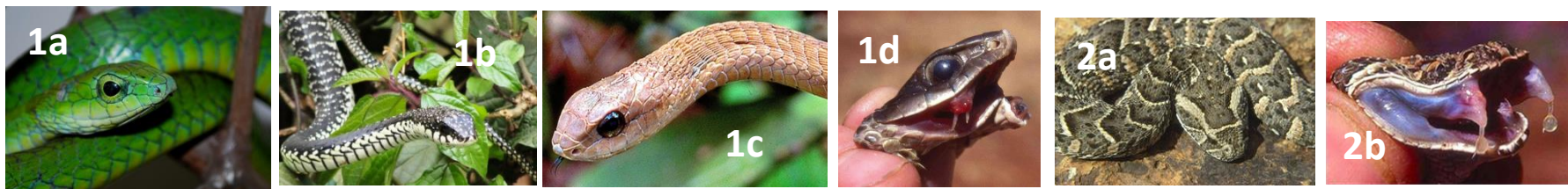


KNOW AND SAVE YOUR SNAKES: VENOMOUS SNAKES OF MWINGI-KITUI



1a, b, c, d. Boomslang *Dispholidus typus*: Colour: Males (green or black/speckled), female (brown, grey/olive); **Back or rear fanged. Kikamba name:** *Ndalanga*. **Habits:** Live on trees and tree holes. **2a,b. Puff-Adder *Bitis arietans*; Kikamba name:** *Kimbuva* **Colour:** Brown, yellow with V-shaped marks; **Hinged/Movable/foldable front fangs. Habits:** Live in ground holes, debris, rock outcrops



All Cobras and Mambas have **fixed front fangs**: **3. Black-necked Spiting Cobra *Naja nigricollis*: Kikamba name:** *Kiko-kiu*; **Colour:** Black, dark-brown **4. Red Spiting Cobra *Naja pallida*. Kikamba names:** *Kiko Kitune, Kiko kya Nguku*; **Colour:** Red, red-brown **5. Brown Spiting Cobra *Naja ashei*. Kikamba name:** *Kiko kya Nzaana*; **Colour:** Brown, grey. **Habits:** All cobras live in ground holes, hollow logs or rock outcrops. **6a,b. Black Mamba *Dendroaspis polylepis*. Kikamba names:** *Ikuuwa, Isembeleli*; **Colour:** Brown, grey, olive. **Habits:** Live in ground holes, hollow logs, abandoned log-beehive, tree hollows or rock outcrops.

Venom types and their symptoms after snakebite

Heamotoxic: Boomslang bite: Affects blood clotting system causing internal bleeding; bleeding from fang area; severe headache, bleeding from cuts, body abrasion & mouth wounds; blood in saliva, urine, faeces or vomit. **Cytotoxic: Puff-Adder and Spitting Cobra bites.** Affects cell tissues. Severe pain & swelling (necrosis); blood blisters near bite site; tissue darkens and die then slough. **Neurotoxic: Mambas and non-spitting Cobra bites.** Affects nerves. Local burning pain, drooping eyes (ptosis), loss of tongue & jaw control, drooling & slurred speech, blurred vision, dilated pupils, laboured breathing.

Some harmless snakes



African Rock Python (*Itaa, Nzese, Nzatu*)



Sand Boa (*Kiinga*)



Speckled Sand Snake (*Muusyi*)



Link-Mark Sand Snake (*Kyenda ndeto*)



Rufous beaked Snake (*Ithangathi*)

